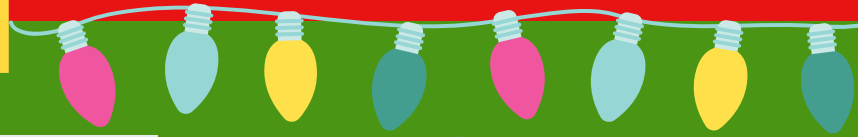


Quarterly Vol.2 Christmas

# AUCKLAND MUSIC THEATRE



## A LETTER FROM THE CHAIR

Kia ora AMT whānau,

Well, what a few months this has been - Groundhog Day anyone? We hope everyone has stayed safe, and sane, during this 'never-ending' lockdown.

This lockdown, I have been focussing on my mental health, so you may have noticed that I have been a bit quiet across the social channels. I am truly grateful to have supportive family and friends who would check in on me, and gently let me know they are there when I need them.

As AMT is also my family, I wanted to take a moment to offer an ear, a shoulder, or a supportive hand to anyone who might need it. I have seen a number of posts and messages over lockdown throughout our theatre community of others offering the same support, so please don't hesitate to reach out. I found that just knowing I had support there was a comfort, and I hope others who need it will too.



IN THIS ISSUE...

### TABLE OF CONTENTS

A letter from the Chair cont.

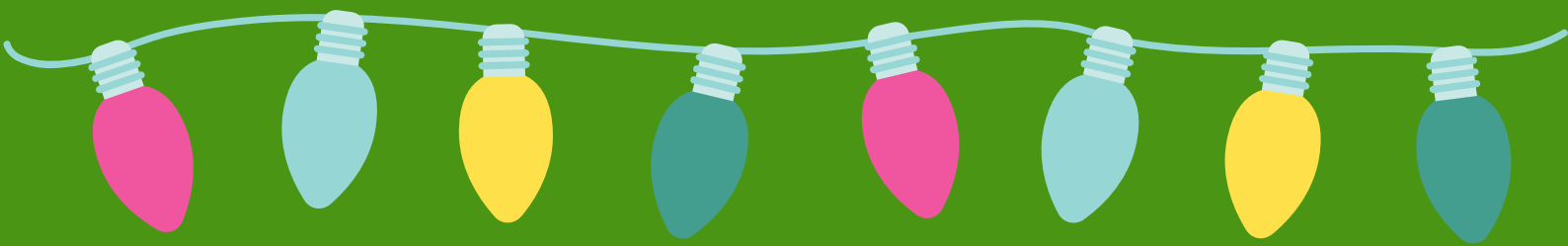
SHOW ANNOUNCEMENTS

Save the Date

Take your best guess

Word find

Questions & Info to members



Back to show business! We were thrilled with the response to our July season of *That Bloody Woman*! The second week was a sell-out, with a number of people attending multiple times, and the audience reviews were glowing. I said it at the time, and I'll say it again – "to those who missed out – make sure you book early in the season for the next show, so you can be the one who discovers the next gem to tell your friends about!" A huge thank you to Richard, Teesh, Chris, Jack and the entire cast, crew and band for rocking out every night and delivering a stellar season!

We were also proud to donate \$300 to The Aunties charity, raised throughout the season, to go towards their support of a whānau of women and their families who have escaped domestic violence.

Lockdown unfortunately scuppered our plans for a Spring members event, but we have been working on ideas for the next events, with both in-person and online options. We'd love to hear from you about what you'd like to do – please get in touch with Jo ([joanna.woode@amt.org.nz](mailto:joanna.woode@amt.org.nz)) with any suggestions of get-togethers or activities you'd like to see us do.

As we progress through November, and lockdown restrictions continue, we are sadly not able to stage any more shows/events for 2021. We are, however, excited to announce our 2022 season, which you can read about within this newsletter!

In the meantime, the team are busy working away on a number of policies, procedures, and general business to keep AMT ticking along, including how we work within the new 'traffic light' system to continue to do what we love.

We look forward to seeing you all again very soon! Stay safe, enjoy the summer, and don't hesitate to reach out!

Lis Carroll



# 2022 SHOW SEASON

## Our Workshop Season - End of March

### CREATIVE TEAM

Hamish McGhie  
Kathleen McGhie  
Erin Fagan

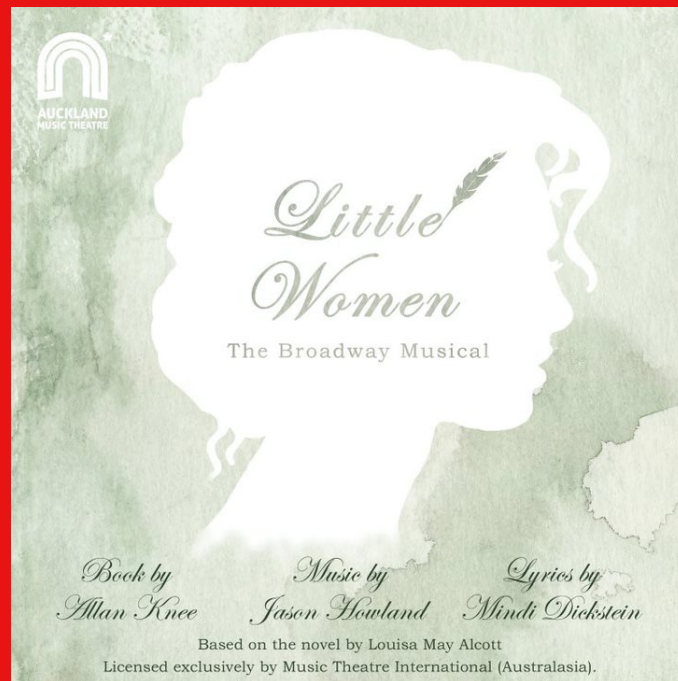
Auditions:  
January 2022



*More info to come!*  
This project has been  
proudly sponsored by



## Our Winter Musical LIVE IN JULY



### CREATIVE TEAM

**Director**  
*John Fausett*  
**Musical Director**  
*Andrew Christie*  
**Vocal Coach**  
*Robyn Kennerley*  
**Choreographer**  
*Marita Gillespie*

## Our End of Year Concert



More  
details  
to come  
in  
2022

**GET TO KNOW THE AMT COMMITTEE!!**

*Simply match the answer to the person. Answer's are on the last few pages.*

**TAKE YOUR BEST GUESS!**



**Favourite Musical???**



LIS  
NICK  
CHARLOTTE  
NOELENE  
JONO  
KRISTOFF  
JO



- 1 - The Hunchback of Notre Dame
- 2 - Book of Mormon
- 3 - Miss Saigon, & The Phantom of the Opera
- 4 - Thoroughly Modern Millie
- 5 - La Cage aux Folles
- 6 - Moulin Rouge
- 7 - Sunday in the park with George

**TAKE YOUR BEST GUESS!**



**First Musical Ever Seen???**



LIS  
NICK  
CHARLOTTE  
NOELENE  
JONO  
KRISTOFF  
JO



- 1 - Beauty and the Beast
- 2 - The Wizard of Oz
- 3 - West Side Story
- 4 - Salad Days
- 5 - Aladdin (movie)
- 6 - Cats
- 7 - The Sound of Music

# TAKE YOUR BEST GUESS!

.....>

**First Musical They Were Involved With???**



LIS  
NICK  
CHARLOTTE  
NOELENE  
JONO  
KRISTOFF  
JO



- 1 - Bugsy Malone
- 2 - The Boyfriend
- 3 - Windust
- 4 - Fame
- 5 - Roger & Hammerstein's Cinderella
- 6 - Jesus Christ Superstar
- 7 - Bugsy Malone

# TAKE YOUR BEST GUESS!

.....>

**Musical That People Must See/Hear!**



LIS  
NICK  
CHARLOTTE  
NOELENE  
JONO  
KRISTOFF  
JO



- 1 - Come From Away
- 2 - The Book of Mormon, & Beetlejuice
- 3 - Natasha, Pierre, and the Great Comet of 1812
- 4 - The Phantom of the Opera
- 5 - Finding Neverland
- 6 - Sibling Revelry
- 7 - Lizzie, & American Psycho

# SAVE THE DATE!!

AMT ANNUAL BBQ

Saturday 15th of January



*Are you up to the challenge?*

B	M	A	R	C	O	H	I	A	W	W	J	U	D	Y
C	E	A	O	A	C	S	P	L	R	I	O	E	T	L
O	T	N	Y	A	Y	I	W	I	A	N	S	N	A	F
N	H	T	Z	W	A	L	T	E	R	S	F	V	G	E
N	A	H	P	E	P	P	U	H	K	L	R	I	A	R
I	Y	O	I	A	N	W	R	S	R	O	A	C	R	G
E	K	N	O	U	U	H	N	E	A	W	N	K	D	U
B	R	Y	A	N	T	L	E	K	L	L	K	I	N	S
O	I	D	S	R	L	O	R	I	C	H	I	E	E	O
B	S	H	I	M	C	V	E	M	M	D	T	D	R	N
B	T	C	O	O	M	O	R	A	L	E	S	I	O	R
Y	I	T	L	A	G	T	S	A	N	L	R	A	T	N
A	N	U	L	R	I	C	H	T	H	U	E	N	B	A
B	E	B	E	M	I	L	L	S	A	C	L	A	L	E
M	A	G	G	I	E	A	L	T	C	A	S	S	I	E

WORDS TO FIND

Zach	Cassie	Ferguson	Mike
Costa	Greg	Gardner	Sheila
Bryant	Bobby	Mills	Bebe
Benzenheimer		Judy	Turner
Richie	Walters	Al	DeLuca
Kristine	Ulrich	Paul	San
Marco	Val	Clark	Connie
Wong	Diana	Morales	Maggie
Winslow	Mark	Anthony	Don
Kerr	Tricia	Vicki	Roy
Lois	Butch	Tom	Frank

A CHORUS LINE - Lyrics found



**ARE YOU A FAN OF THEATRE  
BUT PREFER TO BE BEHIND  
THE SCENES THAN ON  
STAGE? THEN JOIN THE AMT  
FAMILY AND BECOME A  
VOLUNTEER!**

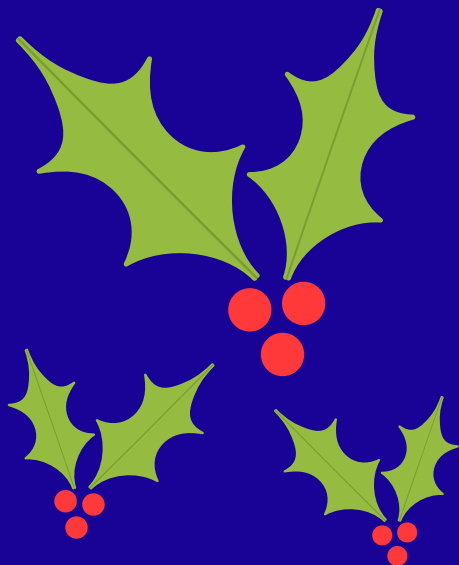


AUCKLAND MUSIC THEATRE IS ALWAYS  
LOOKING FOR VOLUNTEERS TO HELP US  
OUT DURING THE SHOW SEASON. BAR,  
TICKETS, USHERING, ETC.

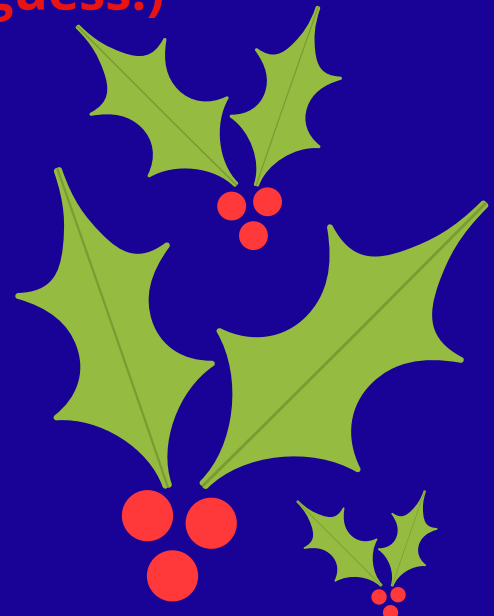
EMAIL US @  
KRISTOFF.BEENS@AMT.ORG.NZ  
TO BE ADDED TO OUR VOLUNTEER LIST.



**ANSWERS (Take your best guess!)**



Lis - 4, 7, 1, 6  
Nick - 7, 4, 2, 3  
Charlotte - 1, 5, 7, 2  
Noelene - 5, 2, 6, 4  
Jono - 2, 6, 3, 1  
Kristoff - 3, 1, 5, 7  
Jo - 6, 3, 4, 5



# MTNZ NEWS

As an outcome of the MTNZ Zone One Meeting Emma Bishop has created a form to curate experts happy to be linked with MTNZ Zone member societies, educational members and associates.

This is for theatre practitioners and suppliers who:

- are available to do the mahi - are available as go-tos for advice and guidance
- are available to run workshops
- are available to mentor new practitioners within all areas of theatre
- who supply goods and services to the theatre industry

If this is you please complete this form at  
<https://forms.gle/byvfSLqPbmNRLN8D8>

All responses to this form will be publicly shared within the MTNZ Zone One Community. However, your contact information will only be shared as you specify as per one of the questions in this form.

Responses can be viewed at

[https://docs.google.com/spreadsheets/d/1rXzrda4pZ2W0KKSbUGJOCM\\_keFLZSVSj3MWZUky-7qU/edit?usp=sharing](https://docs.google.com/spreadsheets/d/1rXzrda4pZ2W0KKSbUGJOCM_keFLZSVSj3MWZUky-7qU/edit?usp=sharing)



**Zone One**  
**EXPERTISE NETWORK**



# ANSWERS

M	A	R	C	O	H	A		W	J	U	D	Y
E	A	O		C		L		I	O			L
	N	Y	A			I		N	A	F		
	T	Z	W	A	L	T	E	R	S	F	V	G
	H	P	E			U	H	K	L	R	I	A
	O		A	N		R	S	R	O	A	C	R
K	N			U	H	N	E	A	W	N	K	D
R	Y	A	N	T	L	E	K	L		K	I	N
I		S	R			R	I	C	H	I	E	E
S	H	I	M	C		M	M	D		D	R	N
T	C	O			M	O	R	A	L	E	S	I
I	T	L		G		S	A	N	L	R	A	N
N	U	L	R	I	C	H	T			U		N
E	B	E	M	I	L	L	S	A	C		A	
A	G	G	I	E	A	L		C	A	S	S	I

B	M	A	R	C	O	H	I	A	W	W	J	U	D
C	E	A	O	A	C	S	P	L	R	I	O	E	T
O	T	N	Y	A	Y	I	W	I	A	N	S	N	A
N	H	T	Z	W	A	L	T	E	R	S	F	V	G
N	A	H	P	E	P	P	U	H	K	L	R	I	A
I	Y	O	I	A	N	W	R	S	R	O	A	C	R
E	K	N	O	U	U	H	N	E	A	W	N	K	D
B	R	Y	A	N	T	L	E	K	L	L	K	I	N
O	I	D	S	R	L	O	R	I	C	H	I	E	E
B	S	H	I	M	C	V	E	M	M	D	T	D	R
B	T	C	O	O	M	O	R	A	L	E	S	I	O
Y	I	T	L	A	G	T	S	A	N	L	R	A	T
A	N	U	L	R	I	C	H	T	H	U	E	N	B
B	E	B	E	M	I	L	L	S	A	C	L	A	L
M	A	G	G	I	E	A	L	T	C	A	S	S	I

## CONTACT US

General Enquiries - [enquiries@aucklandmusictheatre.nz](mailto:enquiries@aucklandmusictheatre.nz)

Membership Enquiries - [membership@aucklandmusictheatre.nz](mailto:membership@aucklandmusictheatre.nz)

Accounts - [accounts@aucklandmusictheatre.nz](mailto:accounts@aucklandmusictheatre.nz)

Show Management / Future Planning - [shows@aucklandmusictheatre.nz](mailto:shows@aucklandmusictheatre.nz)

Wardrobe Hire - [wardrobehire@aucklandmusictheatre.nz](mailto:wardrobehire@aucklandmusictheatre.nz)

Props Hire - [propshire@aucklandmusictheatre.nz](mailto:propshire@aucklandmusictheatre.nz)

Venue Hire - [venuehire@aucklandmusictheatre.nz](mailto:venuehire@aucklandmusictheatre.nz)

Chairperson - Lis Carroll - [chairperson@aucklandmusictheatre.nz](mailto:chairperson@aucklandmusictheatre.nz)

Vice-Chairperson - Nick Brown - [vice-chairperson@aucklandmusictheatre.nz](mailto:vice-chairperson@aucklandmusictheatre.nz)

Secretary - Charlotte Carroll - [secretary@aucklandmusictheatre.nz](mailto:secretary@aucklandmusictheatre.nz)

Newsletter - Joanna Wood - [joanna.wood@amt.org.nz](mailto:joanna.wood@amt.org.nz)